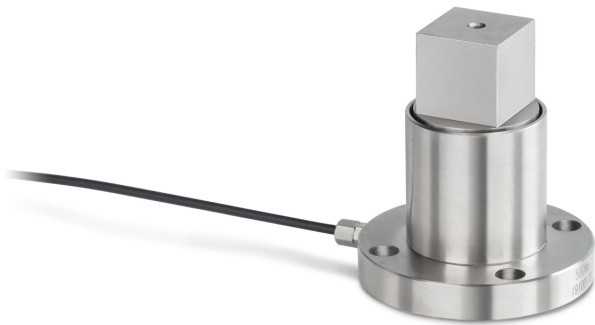


# KERN DC 200-Y1

**KERN**

Static torque sensor made from alloy steel



Mounting - force dissipation 4 × through hole Ø 6,5 mm

## Environmental conditions

Use temperature [Min] -20 °C  
Use temperature [Max] 65 °C

## Packing & Shipping

Readability force [d] (N) 1 d  
Dimensions packaging (W×D×H) 120×90×85 mm  
Net weight 0,38 kg  
Shipping method Parcel service  
Net weight approx. 0,40 kg  
Gross weight approx. 0,45 kg  
Shipping weight 0,421 kg

## Pictograms

### STANDARD



## Category

Brand Sauter  
Product category Measuring cell  
Product group Torque sensor  
Product family DC Y1

## Measuring System

Load cell connection 4-wire  
Load cell - characteristic value - nominal 1,5 mV/V  
Load cell - characteristic value - variance 0,2 mV/V  
Load cell - Combined error 0,5%  
Measuring applications static torque  
Load cell - Input resistance - nominal 380 Ω  
Load cell - Output resistance - nominal 350 Ω  
Load cell - Isolation resistance - [Min] 5000 MΩ  
Load cell - Recommended excitation voltage [Min] 9 V  
Load cell - Recommended excitation voltage [Max] 12 V  
Load cell - Input resistance - variance 10 Ω  
Load cell - Output resistance - variance 3 Ω  
Measuring range torque [Max] 200 Nm

## Approval

CE mark ✓

## Construction

Material steel  
Cable length 2 m  
Mounting - force application 12,5 mm outer square